

# Introduction

CS11J, developed by ChilinkIoT, is a kind of Pin type Ethernet module, which Can quickly realize bidirectional data transmission between serial port and network port.

All data protocol conversions are processed internally, and users only need simple configuration to realize the transmission of data from the serial port to the network. The product has its own communication interface, supports TCP/UDP protocol, supports DHCP and DNS functions. Product parameters can be configured through the built-in Web, which is simple and fast.

The product is stable and reliable, and both packages can be quickly integrated into embedded development boards. The product is widely used in instrumentation, access control and attendance, smart home, industrial control all-in-one machines, medical equipment and other application scenarios.



## Feature

### Industrial-grade Design

- Adopt industrial-grade 32-bits AT processor
- Low consumption, Fast processing, High stability
- Power supply: 5V/3.3V DC wiring pin header
- Ethernet Port: RJ45, built-in filter function
- Small size Ethernet module, can choose pin type or patch type for embedded integrated development

### Communication Characteristic

- Baud rate of serial port range from 600bps to 230.4Kbps, support None, Odd, Even, Mark, Space total five types of verification.
- Support working mode in TCP Client、TCP Server、UDP Client、UDP Server
- Support Modbus protocol or customized protocol
- Support timeout restart (no data restart) function
- mechanism of customized the registration package and heartbeat package to ensure the authenticity and reliability of the connection and eliminate false connections
- Support DHCP or static IP mode

### Reliable and Stable

- Adopt software and hardware watchdog and multi-level link detection mechanism
- Support malfunction detection and restore automatically to ensure working stably

### Device Management

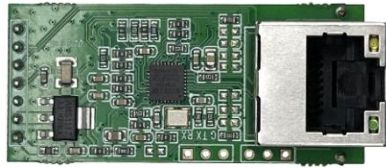
- Page of configuration



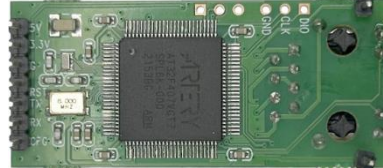
# Other characteristic

## Hardware Diagram

Front Panel



Back Panel

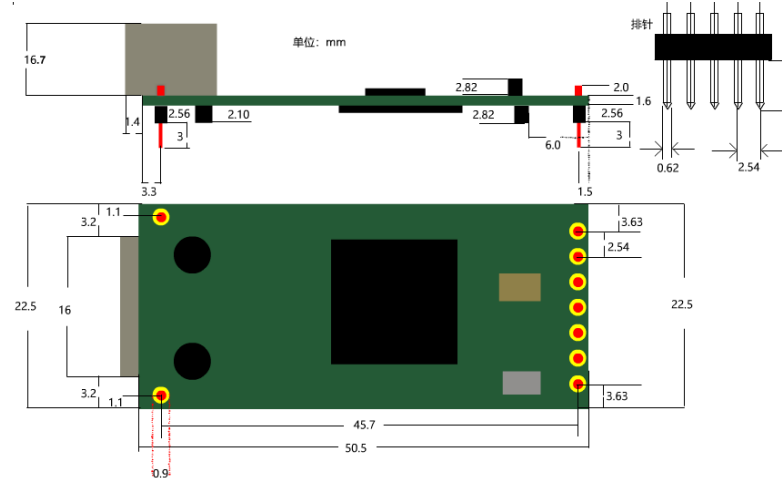


## Definition of PIN of Hardware



### Definition

- CFG: Used as serial port configuration pin; can be left blank
- RX: Receive pin, connect to the TX pin of the opposite end
- TX: Transfer pin, connect to the RX pin of the opposite end
- RST: Reset pin, the pin receives 200ms low level to reset the module; can be left blank.
- GND: Ground pin (signal ground/power ground)
- 3V: Connect to 3.3V voltage, also can choose 5V pins
- 5V: Connect to 5V voltage, also can choose 3.3V pins



- Size: 50.46\*22.5\*23mm
- Weight: about 11g

## Power Supply

- Standard: DC 5V/1A

## Other

- Model: CS11J
- MCU: 240MHz
- Flash/RAM: 256KB / 96KB
- Working Temperature: -30~+70℃
- Storage Temperature: -40~+85℃
- Relative humidity: < 95% No condensation

## Network Topology

